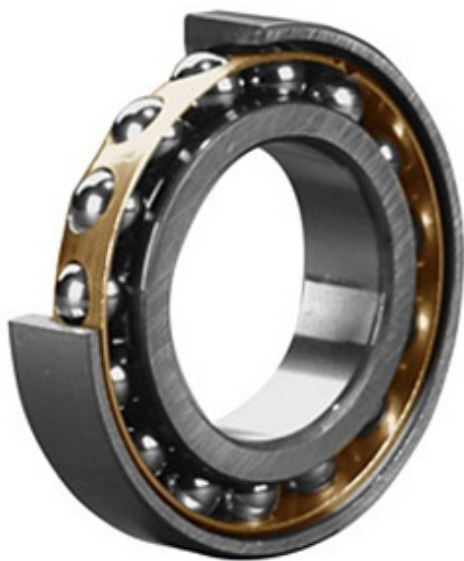




Luoyang SDZ Machinery Equipment Co., ...



7211BMU Bearing 2D drawings and 3D CAD models

2.165 Inch | 55 Millimeter x 3.937 Inch | 100
Millimeter x 0.827 Inch | 21 Millimeter NACHI
7211BMU Angular Contact Ball Bearings

Bearing No. 7211BMU

Category	Angular Contact Ball Bearings
Inventory	0.0
Manufacturer Name	NACHI
Minimum Buy Quantity	N/A
Weight	0.64
Product Group	B00308
Enclosure	Open
Flush Ground	Yes
Rolling Element	Ball Bearing
Number of Rows of Balls	Single Row
Precision Class	ABEC 1 ISO P0
Maximum Capacity / Filling Slot	No
Snap Ring	No
Cage Material	Bronze
Contact Angle	40 Degree
Internal Clearance	C0-Medium
Number of Bearings	1 (Single)
Mounting Arrangement	Universal
Inch - Metric	Metric
Long Description	55MM Bore; 100MM Outside Diameter; 21MM Width; Open; Yes Flush Ground; Ball Bearing; Single Row of Balls; ABEC 1 ISO P0; No Filling Slot; No Snap



Luoyang SDZ Machinery Equipment Co., ...

	Ring
Category	Angular Contact Ball Bearing
UNSPSC	31171531
Harmonized Tariff Code	8482.10.50.28
Noun	Bearing
Keyword String	Angular Contact
Manufacturer URL	http://www.nachi.com
Manufacturer Item Number	7211 BMU T103A
Weight / LBS	1.4
d	2.165 Inch 55 Millimeter
B	0.827 Inch 21 Millimeter
D	3.937 Inch 100 Millimeter
Bore Type	Cylindrical Bore
Configuration	Single Row
Weight	0.676 kg
Bore Size	55 mm
Fillet Radius/Chamfer	1.5 mm
r1	1 mm
a	22.6 mm
Dynamic Load Rating	44,100 N
Static Load Rating	33,800 N
Limiting Speed - Grease	5,700 rpm
Limiting Speed - Oil	7,600 rpm